



The better alternative to  
root canal treated teeth  
THE CERAMIC IMPLANT

Today, ceramic implants offer us the ideal opportunity to replace a dead tooth with a healthier long term alternative - often directly replaced in one session. Unlike the metallic titanium, the ceramic implant does not affect the immune system (immunological neutrality) and does not provide a target for caries or gingivitis. Ceramic implants ensure the best aesthetics because of their white color. It is mechanically a stronger alternative and is metal free, with no possible toxins. After the implant is placed, in a subsequent step, a ceramic crown can fully restore both the aesthetics and function of the original teeth.



Information about health risks due to  
root canal treated teeth

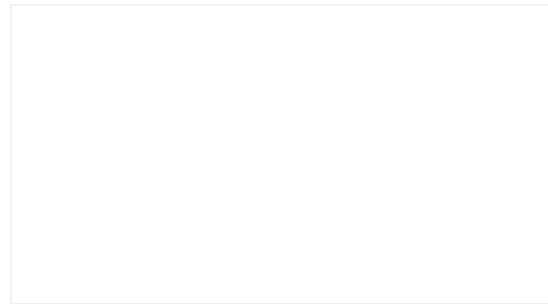


THE SWISS BIOHEALTH CONCEPT

## MAKING THE WORLD A HEALTHIER PLACE

Ask for ceramic implant solutions from  
SDS SWISS DENTAL SOLUTIONS

Your dentist will be happy to advise you!

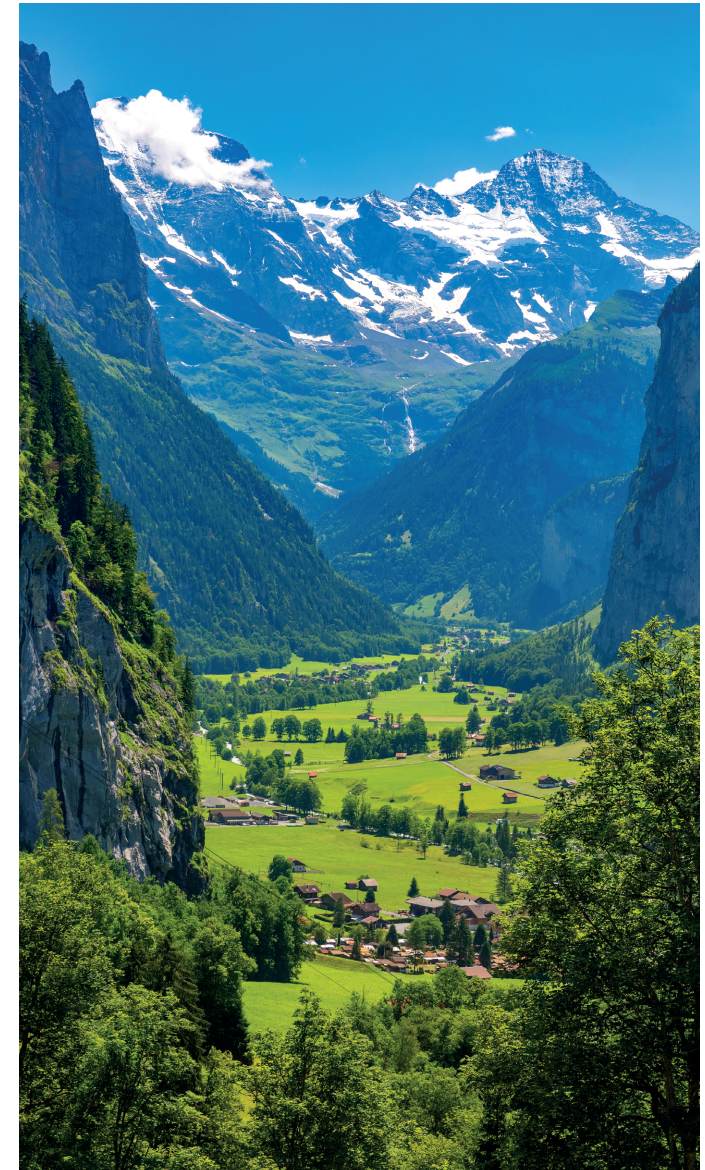


**SDS** SWISS DENTAL  
SOLUTIONS 

SDS Deutschland GmbH  
Bücklestrasse 5a  
78467 Konstanz | Germany  
Hotline +49 7531 89 16 86 0  
info@swissdentalsolutions.com  
www.swissdentalsolutions.com

SDS Swiss Dental Solutions AG  
Konstanzerstrasse 11  
8280 Kreuzlingen | Switzerland  
Hotline +41 71 556 36 70  
info@swissdentalsolutions.com  
www.swissdentalsolutions.com

## Root Canal Treated Teeth – Dead Organs in the Oral Cavity

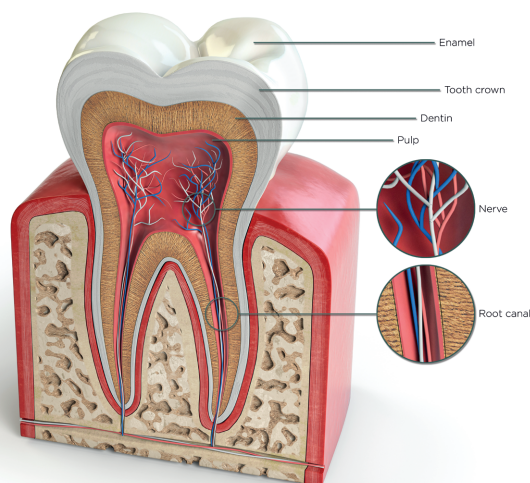




## Basics

### THE HEALTHY TOOTH

Each tooth is an independent organ that constantly exchanges substances and signals with the entire body via its nerve and blood vessels. Therefore, we feel radiating pain when the tooth nerve and the surrounding tissue in the root canal (the so-called pulp) are inflamed. The vital pulp ensures the functioning and defense of the tooth. The central connection point to the body is formed by a relatively large opening in the root tip, from which the pulp emerges. Further openings of the pulp system to the outside exist via hundreds of thousands of small ducts on the entire root surface (so-called tubules and lateral canals).



## Root Canal Treated Teeth

### THE UNHEALTHY TOOTH

#### What is a root canal treated tooth?

A root canal treated or endodontically-treated tooth is a dead organ. The pulp in the root canal has been completely removed by the dentist after the tooth has caused pain or the nerve has died due to decay. In the next step of a root canal treatment, the pulp is replaced with a plastic filling material to seal the cleared root canal.

The problem is, that despite the filling material, the dead tooth is colonized by pathogenic bacteria via the many small tubules and side canals. These bacteria decompose the remaining organic tissue and secrete harmful metabolic products (toxins). Despite the removal of the pulp, the tooth is still in contact with the surrounding tissue, so that the bacteria and their toxins are released into the lymphatic system and bloodstream with every chewing action (focal infection). The dentist will never be able to seal all the secondary canals of the tooth with his instruments. The root canal treated tooth thus represents a potential toxic blockage that could have consequences for the entire body.



Comparison of a healthy tooth with a root canal treated tooth (middle part of crown is still visible).

#### How do I recognize root canal treated teeth?

Root canal treated teeth turn a blackish-greyish color because the tissue is no longer supplied with blood. As a rule, they also smell very unpleasant. This is usually disguised by the fact that they are fitted with a crown, because root canal treated teeth are often brittle and break easily. The dentist recognizes (at best) acute inflammation in the area of the root in the X-ray image. The problem is that such an inflammation is often not even recognizable in the two-dimensional X-ray image or - and even more insidiously - it manifests itself in the form of an underlying, chronic inflammation that cannot be diagnosed with conventional diagnostics. The patient frequently does not feel this inflammation due to the missing nerve.

#### Consequences of root canal treated teeth

Both chronic inflammatory diseases and so-called autoimmune diseases have been on the rise for decades in all industrialized nations. The connection to dead teeth is being researched more and more. The bacteria and their highly toxic, potentially carcinogenic decomposition products weaken the organs and systems of our body, whereupon the immune cells release additional harmful substances - a permanent immunological stress state is the dire consequence. More than 96% of breast cancer patients have root treatments on one or more teeth that are positioned along the gastric meridian (see brochure THE SWISS BIO-HEALTH CONCEPT). Holistic dentists see significant improvements in typical symptoms and diseases when root treated-teeth and other interference fields in the oral cavity are removed.